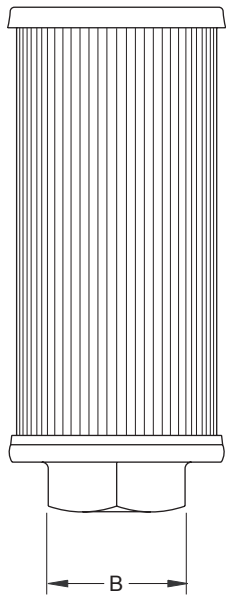


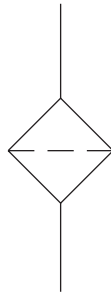
# Power Unit Accessories

## ALL POWER UNITS

### Inlet Strainers

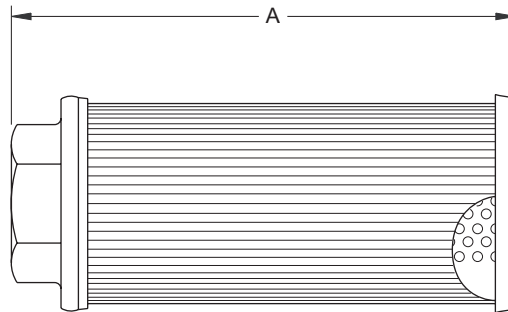
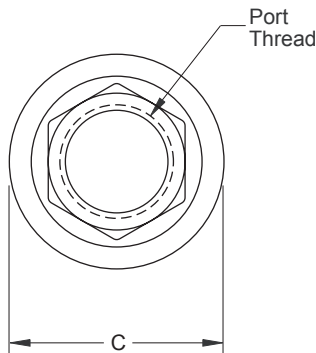


#### Schematic Symbol

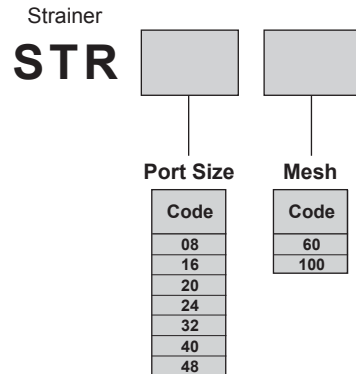


Dimensions shown in: Inches ( $\pm .125$ )  
 (millimeters ( $\pm 1$  mm))

**Description:** Inlet Strainers are used to keep contaminants from entering the hydraulic system.



#### Model Code



#### Dimensions and Specifications

Model Code	A	B	C	Thread	gpm (lpm)	Area	Micron	Part No.
STR-16-60	5.75 (146.0)	1.63 (41.4)	3.19 (81.0)	1" NPT	10 (37.8)	125 sq. in. (806.5 cm <sup>2</sup> )	262	148688
STR-20-60	7.38 (187.5)	2.00 (50.8)	3.19 (81.0)	1-1/4" NPT	20 (75.7)	162 sq. in. (1045.2 cm <sup>2</sup> )	262	148690
STR-24-60	9.13 (231.9)	2.25 (57.1)	4.19 (106.4)	1-1/2" NPT	30 (113.5)	310 sq. in. (2.88 m <sup>2</sup> )	262	148692
STR-32-60	9.75 (247.6)	2.75 (69.8)	4.19 (106.4)	2" NPT	50 (189.2)	340 sq. in. (3.16 m <sup>2</sup> )	262	148694
STR-40-60	12.50 (317.5)	3.25 (82.6)	5.19 (131.8)	2-1/2" NPT	75 (283.9)	400 sq. in. (3.72 m <sup>2</sup> )	262	128802
STR-48-60	10.30 (261.6)	4.00 (101.6)	5.00 (127.0)	3" NPT	150 (567.7)	920 sq. in. (8.55 m <sup>2</sup> )	262	954253
STR-08-100	3.10 (78.7)	1.13 (28.7)	2.70 (68.6)	1/2" NPT	5 (18.9)	62 sq. in. (400.0 cm <sup>2</sup> )	149	944057
STR-16-100	2.13 (54.1)	1.63 (41.4)	3.19 (81.0)	1" NPT	10 (37.8)	14.7 sq. in. (95.2 cm <sup>2</sup> )	149	914469
STR-16-100	6.00 (152.4)	1.88 (47.8)	1.50 (38.1)	1" NPT	10 (37.8)	68 sq. in. (441.0 cm <sup>2</sup> )	149	120806
STR-16-100	5.75 (146.0)	1.63 (41.4)	3.19 (81.0)	1" NPT	10 (37.8)	125 sq. in. (806.5 cm <sup>2</sup> )	149	148689
STR-20-100	7.38 (187.5)	2.00 (50.8)	3.19 (81.0)	1-1/4" NPT	20 (75.7)	162 sq. in. (1045.2 cm <sup>2</sup> )	149	148691
STR-24-100	9.13 (231.9)	2.25 (57.1)	4.19 (106.4)	1-1/2" NPT	30 (113.5)	310 sq. in. (2.88 m <sup>2</sup> )	149	148693
STR-32-100	9.75 (247.6)	2.75 (69.8)	4.19 (106.4)	2" NPT	50 (189.2)	340 sq. in. (3.16 m <sup>2</sup> )	149	148695
STR-40-100	12.50 (317.5)	3.25 (82.6)	5.19 (131.8)	2-1/2" NPT	75 (283.9)	400 sq. in. (3.72 m <sup>2</sup> )	149	128801
STR-48-100	10.30 (261.6)	4.00 (101.6)	5.00 (127.0)	3" NPT	150 (567.7)	920 sq. in. (8.55 m <sup>2</sup> )	149	954052