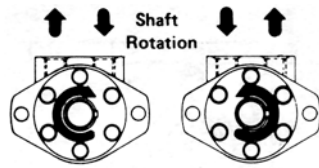


# ADM SERIES GEROTOR MOTOR – LOW SPEED – HIGH TORQUE



The Prince ADM Series of high-torque, low speed motors incorporates the orbiting gerotor principle for dependable operation over a wide range of applications. Although dimensionally small, this motor is capable of providing considerable power over a wide speed range and is instantly reversible by simply reversing the direction of the hydraulic fluid flow. The needs of many applications requiring high starting, stall and running torque combined with slow speed are met by this motor.

### Feature

- Fully reversible simply by reversing the direction of hydraulic fluid flow.
- Alternative port positioning for versatility of installation. (see next page).
- Optional shaft configurations. (see next page).
- Modular construction for economical servicing and repair, also permits special adaptations.

### Filtration

10 micron or finer. (Per ISO cleanliness code level 17/14.

### APPLICATIONS

Use the ADM Series for light to medium duty applications such as grain augers and elevators, salt and sand spreaders, car wash and sweeper brushes, conveyors, winches, scissor lifts, and many other. To assure optimum motor life, run motor for approximately one hour at 30% of rated pressure before application of full load.

### CROSS REFERENCE

CHARLYNN "H" Series  
DANFOSS "DH" Series

It is not recommended to operate at a condition requiring both maximum torque and speed. Splined shafts are recommended in application operating at above 2500 in-lbs. continuous torque or under conditions of frequent reversal.

### Ordering Code

**MOTOR TYPE:**  
ADM

**MOTOR SIZE:**  
50  
75  
100  
150  
200  
250  
300  
400

**MOUNTING:**  
2 Hole Flange – 2  
4 Hole Flange – 4

**SHAFT TYPE:**  
Standard 1" Key R  
1" Splined S  
1" Tapered T  
1" w/Cross-hole U

### PORTS:

P – 1/2 NPTF (Standard)  
O – 7/8 x 14 SAE O-Ring Port  
T – Manifold Port Face (See Next Page)

**END PLATE:**  
(Blank for Standard)

X – Drain Port (if required)

ADM MOTORS ONLY

ADM	DISPLACEMENT		MAXIMUM PRESSURE				MAXIMUM SPEED		WT.*
	CC/REV	CU.IN/REV	PSI		Kgf/CM <sup>2</sup>		RPM		
			CONT	INT <sup>o</sup>	CONT	INT <sup>o</sup>	CONT	INT <sup>o</sup>	
50	49.1	3.0	1400	2200	98	153	800	1000	12.8
75	76.6	4.7	1400	2100	98	146	750	950	13.1
100	99.6	6.1	1300	2000	91	139	600	750	13.4
150	153.2	9.3	1200	1900	84	132	400	500	14.0
200	199.2	12.2	1200	1800	84	125	300	400	14.5
250	252.8	15.3	1100	1700	77	118	250	325	15.0
300	293.2	17.9	1000	1600	70	111	200	250	15.5
400	398.4	24.4	900	1300	63	90	125	160	16.7

Maximum Axial Thrust Load on Shaft 1000 lbs.

<sup>o</sup>Intermittent operation = 10% Operation of every minute

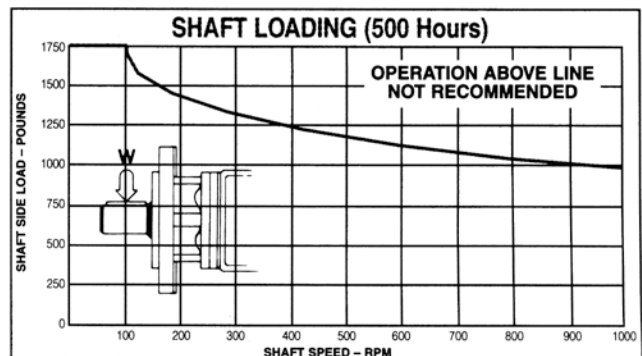
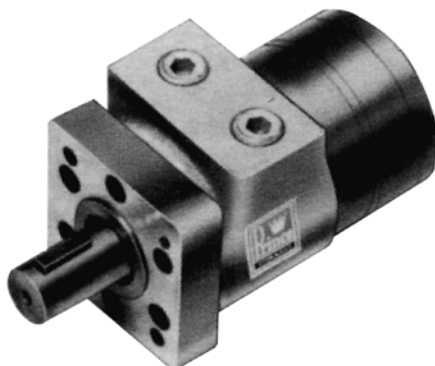
TEMP: NORMAL OPERATING 80° F TO 140° F, MAX 185° F

Maximum inlet pressure 2,500 psi for motors in series

Maximum back pressure 1,000 psi

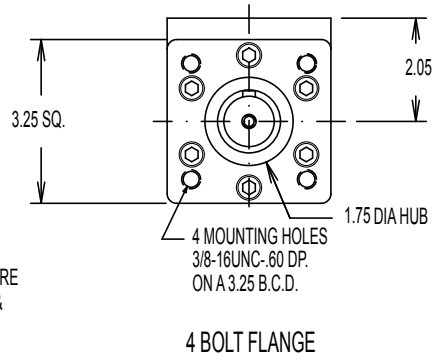
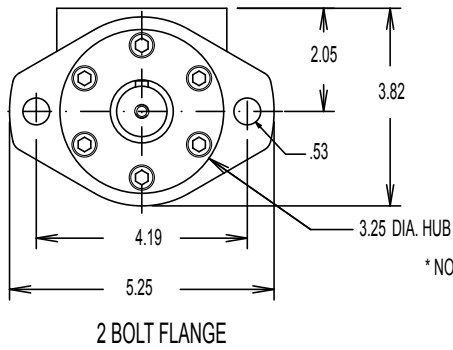
OIL: Mineral based hydraulic fluid 100-200 SUS @ operating temperature.

## ADM SERIES

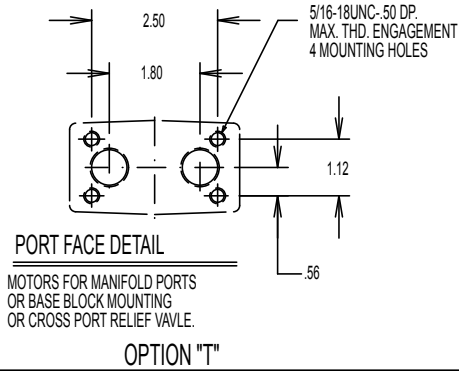
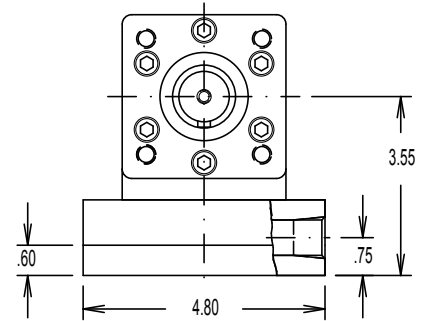
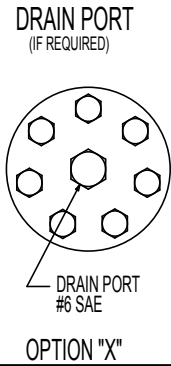
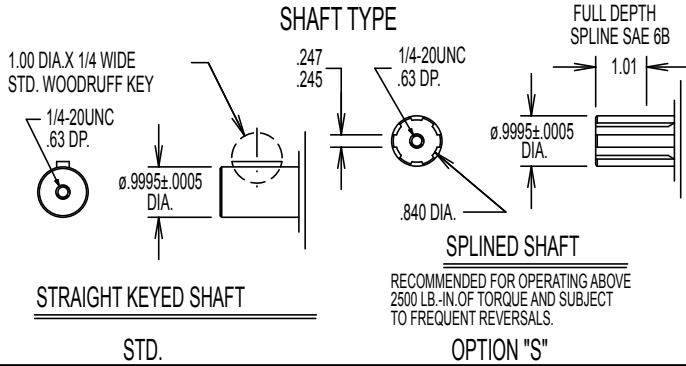


# MOUNTING DIMENSIONS ADM

## MOUNTING



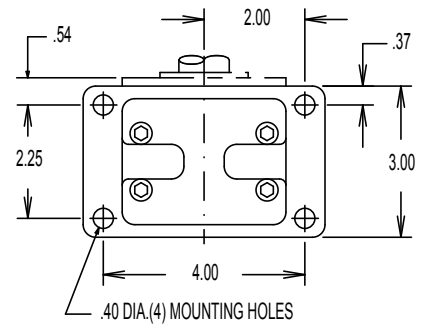
\* NOTE: MOUNTING DIMENSIONS ARE THE SAME FOR THE ADM & AEM MOTORS.



BASE BLOCK MANIFOLD MOUNTING KIT

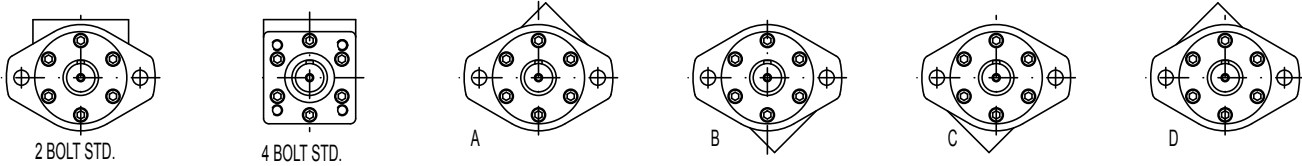
KIT NO.: 786030001 1/2 NPT PORTS  
786030002 #10 SAE PORTS

KIT INCLUDES BASE BLOCK, O-RINGS, AND MOUNTING BOLTS.

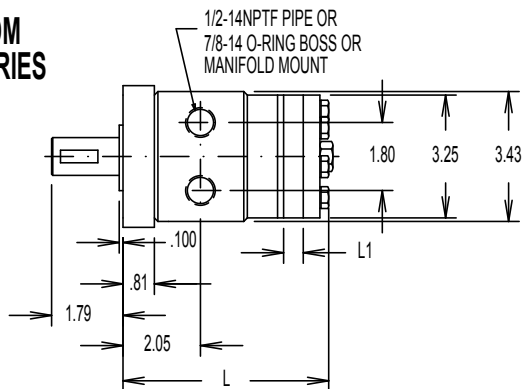


\* NOTE: CAN ONLY BE USED ON MOTORS WITH OPTION "T".

## PORT POSITIONS

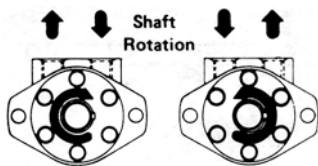
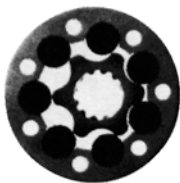


## ADM SERIES



ADM	50	75	100	150	200	250	300	400
L	5.14	5.26	5.40	5.75	5.89	6.14	6.39	6.89
L1	.250	.375	.520	.863	1.00	1.25	1.50	2.00

# AEM SERIES ROLLER MOTOR – LOW SPEED – HIGH TORQUE



The Prince AEM Series Motors incorporate the roller principle of operation offering higher torque than the ADM and extended life in heavy-duty continuous high torque operation along with modular, compact construction. Although dimensionally small, this motor is capable of providing considerable power over a wide speed range and is instantly reversible by simply reversing the direction of the hydraulic fluid flow. The needs of many applications requiring high starting, stall and running torque combined with slow speed are met by this motor.

### Feature

- Fully reversible simply by reversing the direction of hydraulic fluid flow.
- Alternative port positioning for versatility of installation. (see next page).
- Optional shaft configurations. (specials possible).
- Modular construction for economical servicing and repair, also permits special adaptations.

### Filtration

10 micron or finer. (Per ISO cleanliness code level 17/14.

### CROSS REFERENCE

CHARLYNN	"S" Series
WHITE	"RS" Series
ROSS-TRW	"MG/MF" Series
DANFOSS	"DS" Series

It is not recommended to operate at a condition requiring both maximum torque and speed. Splined shafts are recommended in application operating at above 2500 in-lbs. continuous torque or under conditions of frequent reversal.

To assure optimum motor life, run motor for approximately one hour at 30% of rated pressure before application of full load.

AEM	DISPLACEMENT		MAXIMUM PRESSURE				MAXIMUM SPEED		WT. *
	CC/REV	CU.IN/REV	PSI		Kg/CM <sup>2</sup>		RPM		
			CONT	INT <sup>o</sup>	CONT	INT <sup>o</sup>	CONT	INT <sup>o</sup>	
75	75.1	4.6	1700	2400	119	167	800	1000	16.0
100	100.1	6.1	1600	2300	112	160	650	800	16.4
150	150.2	9.2	1500	2200	105	153	400	500	17.2
200	200.2	12.2	1400	2000	98	139	300	400	18.0
250	250.3	15.3	1300	1800	91	125	250	325	18.7
300	300.3	18.4	1200	1600	84	111	200	250	19.5
400	400.4	24.4	1200	1400	84	97	125	160	21.1

### Ordering Code

**MOTOR TYPE:**  
AEM

**MOTOR SIZE:**  
75  
100  
150  
200  
250  
300  
400

**MOUNTING:**  
2 Hole Flange – 2  
4 Hole Flange – 4

**SHAFT TYPE:**  
Standard 1" Key R  
1" Splined S  
1" Tapered T  
1" w/Cross-hole U

### PORTS:

P – 1/2 NPTF (Standard)  
O – 7/8 x 14 SAE O-Ring Port  
T – Manifold Port Face (See Next Page)

**END PLATE:**  
(Blank for Standard)

X – Drain Port (if required)

**AEM MOTORS ONLY**

Maximum Axial Thrust Load on Shaft 1000 lbs.

<sup>o</sup>Intermittent operation = 10% Operation of every minute

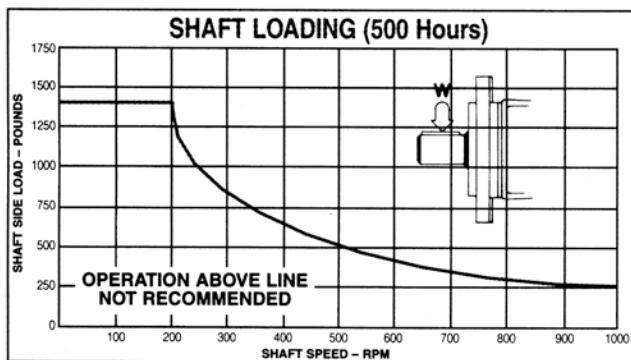
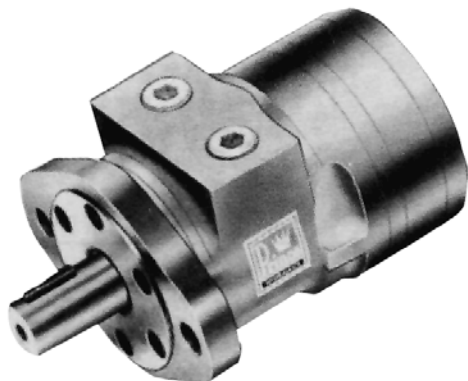
TEMP: NORMAL OPERATING 80° F TO 140° F, MAX 185° F

Maximum inlet pressure 2,500 psi for motors in series

Maximum back pressure 1,000 psi

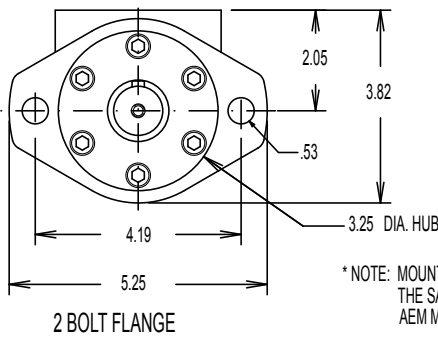
OIL: Mineral based hydraulic fluid 100-200 SUS @ operating temperature.

## AEM SERIES

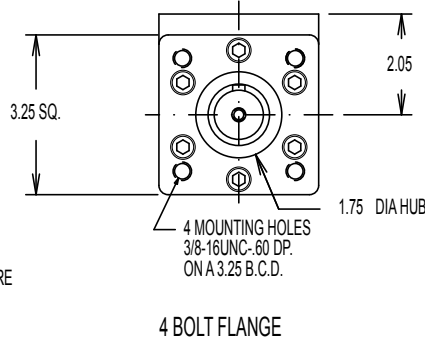


Standard Seal Kit: OHCK-AEM

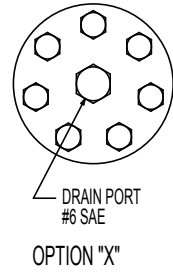
# MOUNTING DIMENSIONS AEM



## MOUNTING

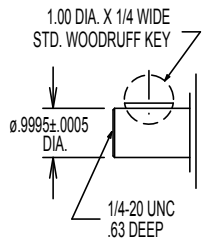


## DRAIN PORT (IF REQUIRED)

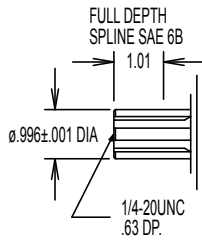


\* NOTE: MOUNTING DIMENSIONS ARE THE SAME FOR THE ADM & AEM MOTORS.

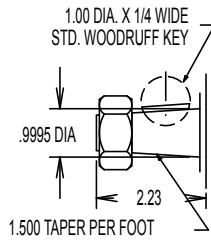
## SHAFT TYPE



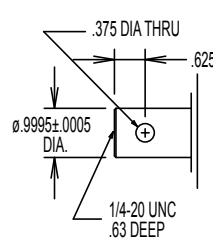
R- STANDARD 1" KEYED SHAFT



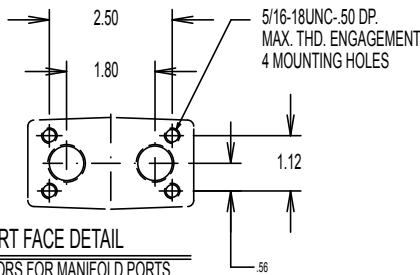
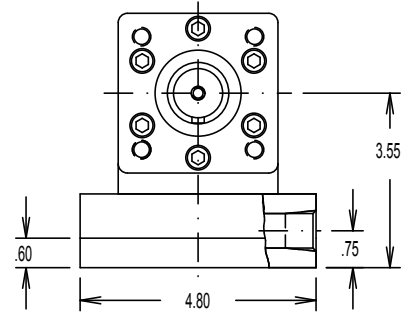
S- 1" 6B SPLINED SHAFT



T- 1" TAPERED SHAFT  
AEM MOTORS ONLY



U- 1" SHAFT WITH 3/8 CROSS HOLE  
AEM MOTORS ONLY



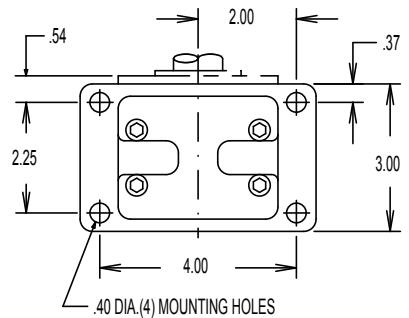
MOTORS FOR MANIFOLD PORTS OR BASE BLOCK MOUNTING OR CROSS PORT RELIEF VALVE.

OPTION "T"

## BASE BLOCK MANIFOLD MOUNTING KIT

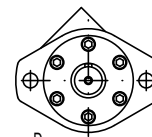
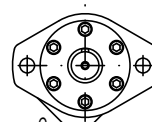
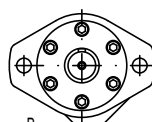
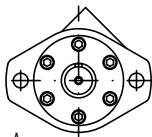
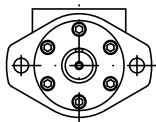
KIT NO.: 786030001 1/2 NPT PORTS  
786030002 #10 SAE PORTS

KIT INCLUDES BASE BLOCK, O-RINGS, AND MOUNTING BOLTS.

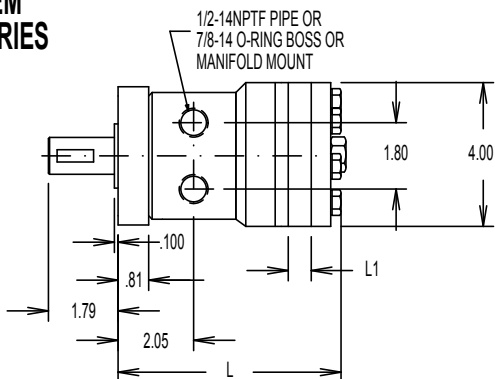


\* NOTE: CAN ONLY BE USED ON MOTORS WITH OPTION "T".

## FOR OPTIONAL PORT POSITIONS ROTATE MOUNTING FLANGE



## AEM SERIES



AEM	75	100	150	200	250	300	400
L	5.44	5.59	5.93	6.07	6.32	6.57	7.07
L1	.375	.520	.863	1.00	1.25	1.50	2.00

# ADM SERIES MOTORS

346  
280

Colored number on top = TORQUE (in-lbs)  
Black number on bottom = SPEED (RPM)

GREATEST EFFICIENCY  
HIGH EFFICIENCY

## Performance Data

### ADM 50

		3.0 Cu. In. REV						Δ PSI	Peak
		200	400	600	800	1000	1200	1400	2250
G P M	2	69	139	209	279	349	419	489	787
		149	143	137	131	125	119	113	63
	4	66	136	206	276	346	416	486	784
		304	298	292	286	280	274	268	218
	6	62	132	202	272	342	412	482	780
		459	453	447	441	435	429	423	373
	8	55	125	195	265	335	405	475	775
		614	608	602	596	590	584	578	529
	10	47	117	187	257	327	397	467	768
		769	763	757	751	745	739	733	684
	12	37	107	177	247	317	387	457	758
		924	918	912	906	900	894	888	839

### ADM 100

		6.07 Cu. In. REV						Δ PSI	Peak
		200	400	600	800	1000	1200	1950	
G P M	2	144	292	440	588	736	884	1437	
		72	68	64	60	56	52	30	
	4	138	286	434	582	730	878	1431	
		147	143	139	135	131	127	105	
	6	130	278	426	574	722	870	1423	
		222	219	216	213	210	207	185	
	8	119	267	415	563	711	859	1412	
		300	297	294	291	288	285	263	
	10	104	252	400	548	696	844	1397	
		375	372	369	366	363	360	368	
	12	85	233	381	529	677	825	1378	
		452	449	446	443	440	437	415	
14	64	212	360	508	656	804	1357		
	528	525	522	519	516	513	491		

### ADM 200

		12.15 Cu. In. REV					Δ PSI	Peak
		200	400	600	800	1000	1650	
G P M	2	283	563	843	1123	1403		
		35	32	29	26	23		
	4	273	553	833	1113	1393	2305	
		74	71	68	65	62	45	
	6	258	538	818	1098	1378	2290	
		112	109	106	103	100	83	
	8	237	517	797	1077	1357	2269	
		149	146	143	140	137	120	
	10	209	489	769	1049	1329	2241	
		187	184	181	178	175	158	
	12	180	460	740	1020	1300	2112	
		225	223	220	217	214	197	
14	136	416	696	976	1256	2168		
	264	261	258	255	252	235		

### ADM 300

		17.9 Cu. In. REV				Δ PSI	Peak
		200	400	600	800	1350	
G P M	2	426	856	1286	1716		
		23	21	18	16		
	4	413	843	1273	1703	2890	
		49	46	44	41	27	
	6	392	822	1252	1682	2865	
		75	72	70	67	53	
	8	362	791	1222	1652	2830	
		101	98	95	93	79	
	10	324	754	1184	1614	2785	
		126	124	121	119	105	
	12	277	707	1137	1567	2735	
		152	150	147	144	131	
14	222	652	1082	1512	2680		
	178	175	173	170	157		

### ADM 75

		4.67 Cu. In. REV						Δ PSI	Peak
		200	400	600	800	1000	1200	1400	2100
G P M	2	111	219	327	435	543	651	759	1138
		93	89	86	82	78	74	70	50
	4	107	215	323	431	539	647	755	1134
		193	189	185	181	177	173	169	149
	6	100	208	316	424	532	640	748	1127
		293	289	285	281	277	273	269	249
	8	90	198	306	414	522	630	738	1117
		393	389	385	381	377	373	369	349
	10	78	186	294	402	510	618	726	1105
		493	489	485	481	477	473	469	449
	12	52	170	278	386	494	602	710	1089
		591	587	583	579	575	571	567	547
14	45	153	261	369	477	585	693	1072	
	691	687	683	679	675	671	667	647	

### ADM 150

		9.37 Cu. In. REV						Δ PSI	Peak
		200	400	600	800	1000	1200	1800	
G P M	2	221	467	713	959	1205	1451	2193	
		46	43	40	37	34	31	15	
	4	214	460	706	952	1198	1444	2186	
		95	92	89	86	83	80	64	
	6	202	448	694	940	1186	1432	2174	
		145	142	139	136	133	130	114	
	8	186	432	678	924	1170	1416	2158	
		194	191	188	185	182	179	163	
	10	164	410	656	902	1148	1394	2136	
		242	239	236	233	230	227	211	
	12	137	383	629	875	1121	1367	2109	
		291	288	285	282	279	276	260	
14	106	352	598	844	1090	1336	2078		
	340	337	334	331	328	325	309		

### ADM 250

		15.25 Cu. In. REV					Δ PSI	Peak
		200	400	600	800	1000	1500	
G P M	2	357	711	1065	1419	1773		
		27	24	21	19	16		
	4	346	700	1054	1408	1762	2647	
		58	55	53	50	47	33	
	6	327	681	1035	1389	1743	2628	
		88	85	83	80	77	63	
	8	301	655	1009	1363	1717	2602	
		119	116	114	111	108	94	
	10	267	621	975	1329	1683	2037	
		149	146	143	141	137	123	
	12	225	570	924	1278	1632	2517	
		179	176	173	171	168	154	
14	176	530	884	1238	1592	2477		
	210	207	205	202	199	185		

### ADM 400

		24.4 Cu. In. REV				Δ PSI	Peak
		200	400	600	800	1200	
G P M	2	565	1136	1707	2279		
		16	14	12	10		
	4	549	1120	1691	2262	3392	
		36	33	31	29	20	
	6	520	1091	1663	2229	3371	
		55	53	51	48	39	
	8	481	1053	1624	2195	3335	
		74	73	70	68	59	
	10	430	1002	1573	2144	3274	
		94	91	89	86	77	
	12	368	939	1511	2082	3213	
		113	111	108	106	97	
14	296	867	1438	2009	3147		
	132	130	127	125	116		

Δ PSI – is the actual pressure difference between the inlet and outlet ports.

A SITUATION OF SIMULTANEOUS PEAK TORQUE AND MAXIMUM RPM SHOULD NOT BE ALLOWED TO OCCUR.

Splined shafts are recommended in applications that operate at torques higher than 2500 in-lbs. Operating motors at both low rpm (10-20 depending on disp) and low torque may result in rpm fluctuations during operation.

To calculate horsepower from chart data use formula: HP (out) = RPM x TORQUE (in-lbs).

63025

# AEM SERIES MOTORS

Colored number on top = TORQUE (in-lbs)  
Black number on bottom = SPEED (RPM)

■ GREATEST EFFICIENCY  
■ HIGH EFFICIENCY

## Performance Data

The performance charts reproduced on these pages indicate normal performance characteristics for the size motors indicated. Through use of the horizontal scale – PSI – and the vertical scale – GPM – the correct motor size can be determined for specific applications. Interpolation may be used for numbers not given in these charts.

To assure optimum motor life, run motor for approximately one hour at 30% of rated pressure before application of full load. Be sure motor is filled with fluid prior to any load applications.

These are typical motor performances and actual data may vary slightly from unit in production.

### AEM 75

		4.59 Cu. In. REV								Peak	
		Δ PSI								2400	
		100	300	500	700	900	1100	1300	1500	1700	
G P M	1	54 50	108 47	238 43	358 37	468 31	578 25	678 19	778 12	*	*
	3	49 148	140 144	282 139	410 134	542 130	684 126	815 122	945 117	1075 108	1512 59
	5	41 248	162 247	302 242	432 236	562 232	702 225	837 217	972 210	1102 201	1555 153
	7	30 346	162 344	302 340	432 335	568 328	707 320	842 312	983 302	1112 293	1577 250
	9	13 444	151 443	301 400	423 434	562 427	698 420	840 410	974 400	1091 390	1544 323
	11		130 542	275 538	408 533	545 526	680 518	826 509	950 499	1075 498	**
	13		108 641	253 638	389 633	526 627	660 618	807 609	940 598	1071 589	**
	15		81 739	227 733	365 727	518 719	637 710	786 700	918 691	**	**

### AEM 100

		6.12 Cu. In. REV								Peak	
		Δ PSI								2400	
		100	300	500	700	900	1100	1300	1500	1600	
G P M	1	74 37	221 35	389 32	546 27	714 21	872 15	1029 10	†	†	†
	3	84 109	231 107	410 104	567 100	746 96	913 90	1082 85	1239 77	1323 69	1869 37
	5	74 183	231 181	410 178	578 174	756 170	924 164	1092 157	1260 149	1344 142	1964 107
	7	63 257	221 257	399 252	567 242	746 238	914 228	1092 223	1260 214	1334 176	2016 176
	9	42 333	200 328	389 323	557 318	735 313	903 309	1071 304	1239 295	1334 285	2016 242
	11		179 404	357 399	525 394	704 390	882 383	1050 377	1218 370	1314 362	**
	13		147 473	336 470	504 466	683 461	850 456	1029 451	1187 442	1281 437	**
	15		116 551	310 546	473 542	641 537	809 532	987 523	1165 513	**	**

### AEM 150

		9.18 Cu. In. REV							Peak	
		Δ PSI							2200	
		100	300	500	700	900	1100	1300	1500	
G P M	1	114 24	361 23	599 20	836 17	†	†	†	†	†
	3	114 74	380 71	627 69	874 67	1121 63	1378 59	1634 55	1881 50	2696 32
	5	105 121	371 121	618 119	884 117	1131 114	1387 110	1634 106	1881 102	2736 81
	7	95 171	352 169	599 168	865 165	1112 161	1378 156	1634 150	1862 150	2736 127
	9	67 219	323 217	570 215	836 213	1093 209	1349 205	1596 201	1843 196	2717 175
	11		276 268	532 268	808 263	1055 263	1311 257	1558 252	1824 247	2679 226
	13		238 315	494 315	760 310	1055 305	1264 299	1501 294	1768 289	**
	15		181 368	447 362	713 362	960 357	1216 352	1463 347	1729 341	**

### AEM 200

		12.23 Cu. In. REV							Peak	
		Δ PSI							2000	
		100	300	500	700	900	1100	1300	1400	
G P M	1	140 18	441 17	788 15	1091 11	*	*	*	*	*
	3	140 55	464 55	810 53	1123 52	1447 50	1771 46	2009 44	2246 42	3197 28
	5	130 93	464 93	799 90	1123 88	1447 88	1771 85	2030 81	2268 81	3380 64
	7	97 130	454 130	767 126	1102 124	1426 122	1728 121	2030 119	2246 117	3413 102
	9	54 167	432 165	745 163	1080 161	1392 159	1706 157	2009 155	2225 154	3380 137
	11		356 202	702 202	1037 198	1350 198	1663 193	1964 193	2160 193	3348 175
	13		324 239	702 239	994 239	1307 235	1609 230	1922 230	2177 225	**
	15		270 276	605 276	929 271	1253 271	1566 267	1879 262	2052 262	**

### AEM 250

		15.26 Cu. In. REV							Peak
		Δ PSI							1800
		100	300	500	700	900	1100	1200	
G P M	1	173 15	572 14	940 13	1372 10	†	†	†	†
	3	194 44	605 42	983 40	1415 38	1782 36	2138 34	2344 32	3521 21
	5	151 74	605 72	1015 72	1415 70	1793 66	2203 64	2408 62	3629 52
	7	140 104	572 102	983 100	1393 98	1782 95	2203 92	2419 90	3629 81
	9	86 133	518 131	940 129	1350 128	1739 125	2160 122	2396 120	3629 108
	11		464 161	886 159	1307 157	1696 154	2117 152	2344 150	3596 137
	13		400 193	821 189	1242 189	1652 184	2052 179	2290 175	3769 166
	15		324 221	756 216	1188 216	1598 212	1987 207	2214 202	**

### AEM 300

		18.35 Cu. In. REV						Peak	
		Δ PSI						2000	
		100	300	500	700	900	1100	1200	
G P M	1	216 12	680 11	1145 10	1566 8	2009 6	†	†	†
	3	194 37	702 36	1210 35	1685 34	2138 33	2614 25	2873 20	3812 9
	5	162 63	680 61	1231 61	1706 59	2160 57	2657 53	2894 50	3845 35
	7	130 86	659 85	1199 83	1685 81	2138 79	2635 75	2873 72	3845 61
	9	81 111	616 110	1156 109	1642 107	2117 107	2570 99	2830 93	3812 81
	11	11 137	572 135	1091 133	1577 131	2030 128	2527 126	2756 121	3737 111
	13		508 159	1015 157	1490 154	1966 152	2441 148	2678 144	3661 133
	15		454 154	940 181	1426 179	1901 177	2354 174	2614 172	3596 161

### AEM 400

		24.43 Cu. In. REV						Peak	
		Δ PSI						1300	
		100	300	500	700	900	1100	1200	
G P M	1	281 9	702 8	1377 7	2001 5	†	†	†	†
	3	254 28	783 27	1539 26	2182 22	2786 17	3413 9	3737 5	4104 †
	5	205 46	810 45	1566 44	2225 43	2851 39	3445 34	3769 29	4104 24
	7	151 64	788 64	1544 63	2203 63	2830 59	3413 55	3737 52	4061 48
	9	86 83	745 83	1485 81	2138 79	2765 77	3380 73	3704 71	4028 68
	11	22 102	691 101	1426 100	2074 98	2678 96	3305 92	3629 89	3953 86
	13		626 121	1323 120	1987 119	2592 117	3197 109	3521 107	3845 104
	15		540 139	1215 137	1901 135	2484 133	3121 130	3413 126	3737 121

† LESS THAN 5 RPM \*LESS THAN 10 RPM \*\*OPERATION UNDER THESE CONDITIONS NOT RECOMMENDED

# ADM SERIES HYDRAULIC MOTOR CROSS REFERENCE

DISPLACEMENT CU. IN./REV.												
	SHAFT	PORTS	MOTOR BRAND	2.9	4.4	6.1	10.1	11.7	14.6	17.5	23.4	
4 BOLT FLANGE MOUNTING	WOODRUFF KEYS	1/2" NPT	PRINCE	ADM50-4RP	ADM75-4RP	ADM100-4RP	ADM150-4RP	ADM200-4RP	ADM250-4RP	ADM300-4RP	ADM400-4RP	
			CHARLYN H	101-1001	101-1002	101-1003	101-1004	101-1005	101-1006	101-1007	101-1008	
		DANFOSS DH	151-2121	151-2122	151-2123	151-2125	151-2126	151-2127	151-2128	151-2129		
		#10 SAE	PRINCE	ADM50-4RO	ADM75-4RO	ADM100-4RO	ADM150-4RO	ADM200-4RO	ADM250-4RO	ADM300-4RO	ADM400-4RO	
			CHARLYN H	101-1009	101-1010	101-1011	101-1012	101-1013	101-1014	101-1015	101-1016	
		DANFOSS DH	151-2041	151-2042	151-2043	151-2045	151-2046	151-2047	151-2048	151-2049		
	MANIFOLD	1/2" NPT	PRINCE	ADM50-4RT	ADM75-4RT	ADM100-4RT	ADM150-4RT	ADM200-4RT	ADM250-4RT	ADM300-4RT	ADM400-4RT	
			CHARLYN H	101-1017	101-1018	101-1019	101-1020	101-1021	101-1022	101-1023	101-1024	
		DANFOSS DH	151-2201	151-2202	151-2203	151-2205	151-2206	151-2207	151-2208	151-2209		
		1/2" NPT	PRINCE	ADM50-4SP	ADM75-4SP	ADM100-4SP	ADM150-4SP	ADM200-4SP	ADM250-4SP	ADM300-4SP	ADM400-4SP	
			CHARLYN H	101-1049	101-1050	101-1051	101-1052	101-1053	101-1054	101-1055	101-1056	
		DANFOSS DH	151-2131	151-2132	151-2133	151-2135	151-2136	151-2137	151-2138	151-2139		
2 BOLT FLANGE MOUNTING	WOODRUFF KEYS	#10 SAE	PRINCE	ADM50-4SO	ADM75-4SO	ADM100-4SO	ADM150-4SO	ADM200-4SO	ADM250-4SO	ADM300-4SO	ADM400-4SO	
			CHARLYN H	101-1057	101-1058	101-1059	101-1060	101-1061	101-1062	101-1063	101-1064	
		DANFOSS DH	151-2051	151-2052	151-2053	151-2055	151-2056	151-2057	151-2058	151-2059		
		MANIFOLD	PRINCE	ADM50-4ST	ADM75-4ST	ADM100-4ST	ADM150-4ST	ADM200-4ST	ADM250-4ST	ADM300-4ST	ADM400-4ST	
			CHARLYN H	101-1065	101-1066	101-1067	101-1068	101-1069	101-1070	101-1071	101-1072	
		DANFOSS DH	151-2211	151-2212	151-2213	151-2215	151-2216	151-2217	151-2218	151-2219		
	1/2" NPT	PRINCE	ADM50-2RP	ADM75-2RP	ADM100-2RP	ADM150-2RP	ADM200-2RP	ADM250-2RP	ADM300-2RP	ADM400-2RP		
		CHARLYN H	101-1025	101-1026	101-1027	101-1028	101-1029	101-1030	101-1031	101-1032		
		DANFOSS DH	151-2081	151-2082	151-2083	151-2085	151-2086	151-2087	151-2088	151-2089		
		#10 SAE	PRINCE	ADM50-2RO	ADM75-2RO	ADM100-2RO	ADM150-2RO	ADM200-2RO	ADM250-2RO	ADM300-2RO	ADM400-2RO	
			CHARLYN H	101-1033	101-1034	101-1035	101-1036	101-1037	101-1038	101-1039	101-1040	
		DANFOSS DH	151-2001	151-2002	151-2003	151-2005	151-2006	151-2007	151-2008	151-2009		
MANIFOLD	1/2" NPT	PRINCE	ADM50-2RT	ADM75-2RT	ADM100-2RT	ADM150-2RT	ADM200-2RT	ADM250-2RT	ADM300-2RT	ADM400-2RT		
		CHARLYN H	101-1041	101-1042	101-1043	101-1044	101-1045	101-1046	101-1047	101-1048		
	DANFOSS DH	151-2161	151-2162	151-2163	151-2165	151-2166	151-2167	151-2168	151-2169			
	1/2" NPT	PRINCE	ADM50-2SP	ADM75-2SP	ADM100-2SP	ADM150-2SP	ADM200-2SP	ADM250-2SP	ADM300-2SP	ADM400-2SP		
		CHARLYN H	101-1073	101-1074	101-1075	101-1076	101-1077	101-1078	101-1079	101-1080		
	DANFOSS DH	151-2091	151-2092	151-2093	151-2095	151-2096	151-2097	151-2098	151-2099			
#10 SAE	MANIFOLD	PRINCE	ADM50-2SO	ADM75-2SO	ADM100-2SO	ADM150-2SO	ADM200-2SO	ADM250-2SO	ADM300-2SO	ADM400-2SO		
		CHARLYN H	101-1081	101-1082	101-1083	101-1084	101-1085	101-1086	101-1087	101-1088		
	DANFOSS DH	151-2011	151-2012	151-2013	151-2015	151-2016	151-2017	151-2018	151-2019			
	MANIFOLD	PRINCE	ADM50-2ST	ADM75-2ST	ADM100-2ST	ADM150-2ST	ADM200-2ST	ADM250-2ST	ADM300-2ST	ADM400-2ST		
		CHARLYN H	101-1089	101-1090	101-1091	101-1092	101-1093	101-1094	101-1095	101-1096		
	DANFOSS DH	151-2171	151-2172	151-2173	151-2175	151-2176	151-2177	151-2178	151-2179			

NOTE: THE CROSS REFERENCE INFORMATION IN THIS CHART IS TO BE USED ONLY AS A REFERENCE FOR GUIDELINE PURPOSES ONLY. AFTER SELECTING A MODEL FROM ABOVE, REVIEW THE MOTOR SPECIFICATIONS TO DETERMINE COMPATIBILITY WITH SPECIFIC APPLICATION.

# AEM SERIES HYDRAULIC MOTOR CROSS REFERENCE

				DISPLACEMENT CU. IN./REV.						
SHAFT	PORTS	MOTOR BRAND	4.2	5.9	9.7	11.3	14.1	16.9	22.5	
4 BOLT FLANGE MOUNTING	WOODRUFF KEYS	MANIFOLD	PRINCE	AEM75-4RT	AEM100-4RT	AEM150-4RT	AEM200-4RT	AEM250-4RT	AEM300-4RT	AEM400-4RT
			CHARLYN S	MG05-11-10	MG06-11-10	MG10-11-10	MG12-11-10	MG16-11-10	MG18-11-10	MG24-11-10
			ROSS	RS-04050100	RS-06050100	RS-10050100	RS-12050100	RS-14050100	RS-18050100	RS24050100
		1/2" NPT	PRINCE	AEM75-4SP	AEM100-4SP	AEM150-4SP	AEM200-4SP	AEM250-4SP	AEM300-4SP	AEM400-4SP
			CHARLYN S	MG05-13-11	MG06-13-11	MG10-13-11	MG12-13-11	MG16-13-11	MG18-13-11	MG24-13-11
			ROSS	RS-04010600	RS-06010600	RS-10010600	RS-12010600	RS-14010600	RS-18010600	RS24010600
	SPLINED	MANIFOLD	PRINCE	AEM75-4ST	AEM100-4ST	AEM150-4ST	AEM200-4ST	AEM250-4ST	AEM300-4ST	AEM400-4ST
			CHARLYN S	MG05-10-11	MG06-11-11	MG10-11-11	MG12-11-11	MG16-11-11	MG18-11-11	MG24-11-11
			ROSS	RS-04050600	RS-06050600	RS-10050600	RS-12050600	RS-14050600	RS18050600	RS24050600
		1/2" NPT	PRINCE	AEM75-2RP	AEM100-2RP	AEM150-2RP	AEM200-2RP	AEM250-2RP	AEM300-2RP	AEM400-2RP
			CHARLYN S	MG05-12-10	MG06-12-10	MG10-12-10	MG12-12-10	MG16-12-10	MG18-12-10	MG24-12-10
			ROSS	RS-04030100	RS-06030100	RS-10030100	RS-12030100	RS-14030100	RS18030100	RS24030100
2 BOLT FLANGE MOUNTING	WOODRUFF KEYS	MANIFOLD	PRINCE	AEM75-2RT	AEM100-2RT	AEM150-2RT	AEM200-2RT	AEM250-2RT	AEM300-2RT	AEM400-2RT
			CHARLYN S	MG05-10-10	MG06-10-10	MG10-10-10	MG12-10-10	MG16-10-10	MG18-10-10	MG24-10-10
			ROSS	RS-04060100	RS-06060100	RS-10060100	RS-12060100	RS-14060100	RS18060100	RS24060100
		1/2" NPT	PRINCE	AEM75-2SP	AEM100-2SP	AEM150-2SP	AEM200-2SP	AEM250-2SP	AEM300-2SP	AEM400-2SP
			CHARLYN S	MG05-10-11	MG06-12-11	MG10-10-11	MG12-12-11	MG16-12-11	MG18-12-11	MG24-12-11
			ROSS	RS-04030600	RS-06030600	RS-10030600	RS-12030600	RS-14030600	RS18030600	RS24030600
	SPLINED	MANIFOLD	PRINCE	AEM75-2SO	AEM100-2SO	AEM150-2SO	AEM200-2SO	AEM250-2SO	AEM300-2SO	AEM400-2SO
			CHARLYN S	MG05-10-11	MG06-10-11	MG10-10-11	MG12-10-11	MG16-10-11	MG18-10-11	MG24-10-11
			ROSS	RS-04040600	RS-06040600	RS-10040600	RS-12040600	RS-14040600	RS18040600	RS24040600
		MANIFOLD	PRINCE	AEM75-2ST	AEM100-2ST	AEM150-2ST	AEM200-2ST	AEM250-2ST	AEM300-2ST	AEM400-2ST
			CHARLYN S	MG05-10-11	MG06-10-11	MG10-10-11	MG12-10-11	MG16-10-11	MG18-10-11	MG24-10-11
			ROSS	RS-04060600	RS-06060600	RS-10060600	RS-12060600	RS-14060600	RS18060600	RS24060600

NOTE: THE CROSS REFERENCE INFORMATION IN THIS CHART IS TO BE USED ONLY AS A REFERENCE FOR GUIDELINE PURPOSES ONLY. AFTER SELECTING A MODEL FROM ABOVE, REVIEW THE MOTOR SPECIFICATIONS TO DETERMINE COMPATIBILITY WITH SPECIFIC APPLICATION.

